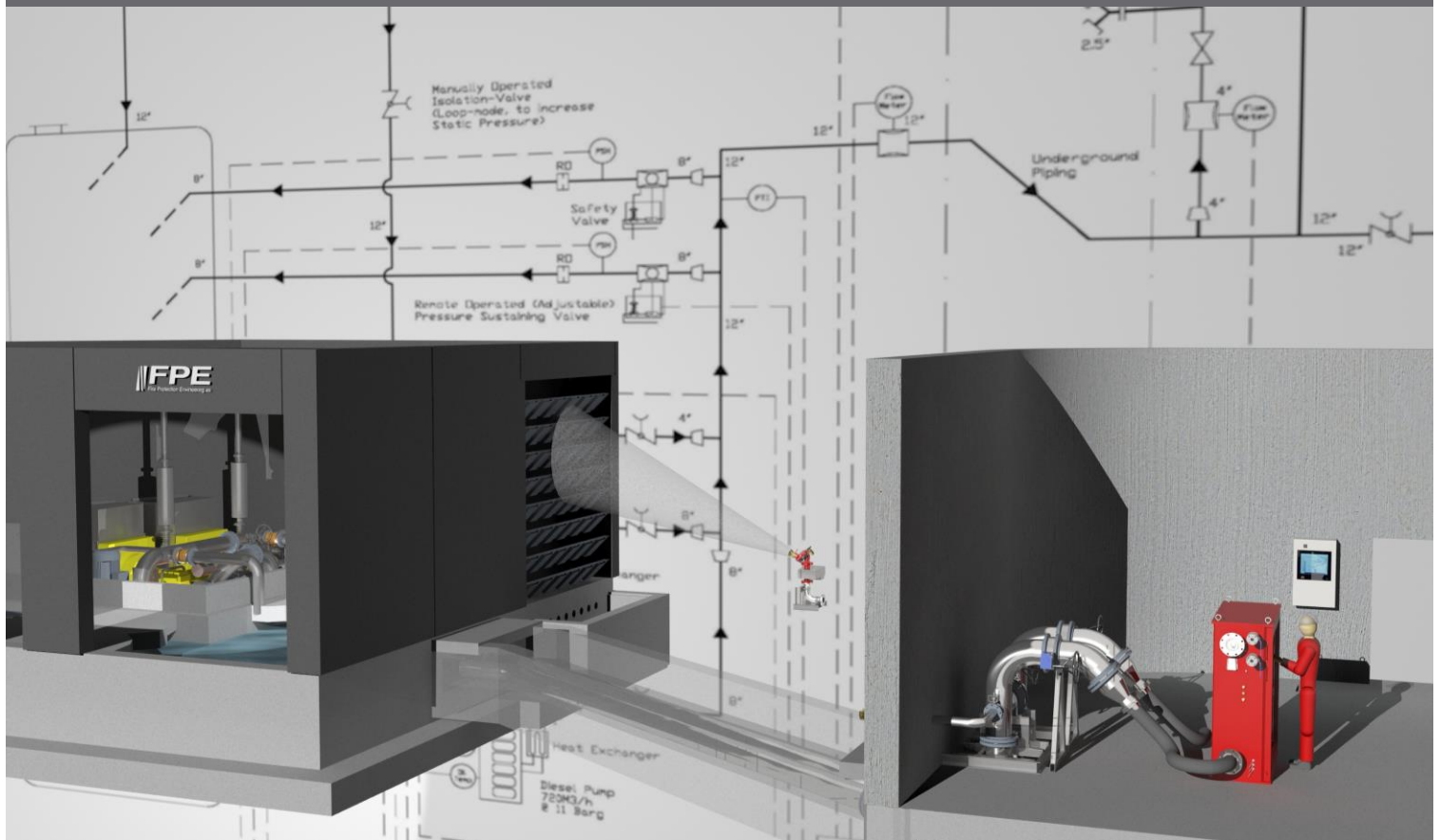


# Test facilities for Fire Fighting Equipment



## Meet the most stringent demands for fire protection for oil and gas installations.

**FPE** have designed and constructed a "State of the Art" test-facility, with large capacity and high flexibility.

We can carry out full functional testing and leak testing of all water-based fire fighting equipment, such as deluge-, sprinkler-, monitor-, hydrant- and hose reel systems may be performance tested, at full capacity.

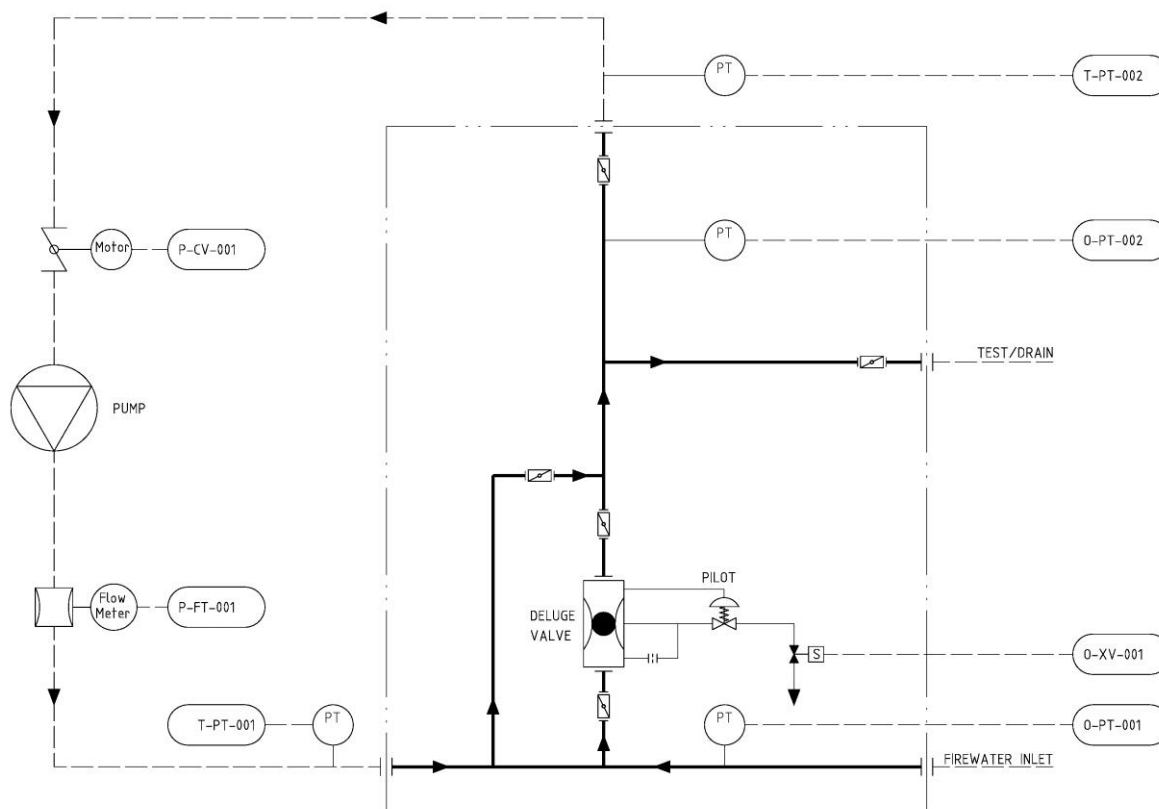
The pumps and engines are installed in an insulated building and water is fed from a 80m<sup>3</sup> tank. All engine functions are remotely controlled. The flow-meter is installed on a piping loop, which returns the water to the tank.

Our main objective is to contribute to the protection of your personnel and production facilities, by ensuring that your extinguishing systems operate safely at all times.

More details and technical information about FPE systems, and solutions: [www.fpe.no](http://www.fpe.no)

# Capacities and performance

- Water Reservoir, 80m<sup>3</sup>.
- Pump, 2 off, Diesel-driven (Engine = 300 kW).
- Performance: 24000 LPM (1440 m<sup>3</sup>/h) @ 11 Barg
- Adjustable (Remote control) Back-Pressure Valve, Ball-segment type, 10".
- Flowmeter, 12" E&H Promag 50W, 1330 – 40000 LPM (80 – 2400 m<sup>3</sup>/h).
- Flowmeter, 4" E&H Promag 50W, 145 – 4700 LPM (8.7 – 282 m<sup>3</sup>/h).
- Pressure Transmitters & Solenoid Valves (for monitoring of the Clients Equipment).
- Remote Control (via PLC) w. Data-logging.
- "Water-Funnel" used for recirculation of water when testing Hydrants and Monitors.



Fire Protection Engineering AS (FPE) is a leading supplier of fire fighting systems to the oil and gas industry. FPE supplies complete projects, including project management, design, engineering, production and assembly, installation and commissioning, training, maintenance and service. The acquisition of Sontum Fire and Safety has strengthened FPE's position as a full-range supplier to newbuildings, maintenance and modification (MMO), as well as the aftermarket. A substantial part of FPE's deliveries goes to international markets. The company's main office is at Forus outside Stavanger. FPE is one of five companies in the ALIGN group, a leading supplier of production equipment and safety critical products and solutions. ALIGN offers services ensuring continuous production, a perspective that safeguards optimal operations and lower life-cycle costs. ALIGN is a result of the demerger of Bjørge AS, which was carried out in December 2010. The ALIGN group is owned by Convento Capital and HitecVision. [www.align.no](http://www.align.no)